



Purpose of Design Open House



Share information



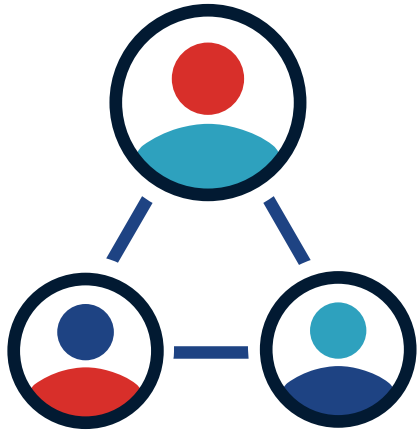
Discuss the project



Receive public input



Open House Components



Open house



Presentation



Public comment period



Florida Department of Transportation

Title VI

FDOT is required to comply with various
**Non-discrimination laws and regulations,
including Title VI of the Civil Rights Act of 1964**

Public participation is solicited without regard to
race, color, national origin, age, sex, religion, disability or family status.



Tile VI – Nondiscrimination Program

Dorothy Neal
District 2 Title VI Coordinator

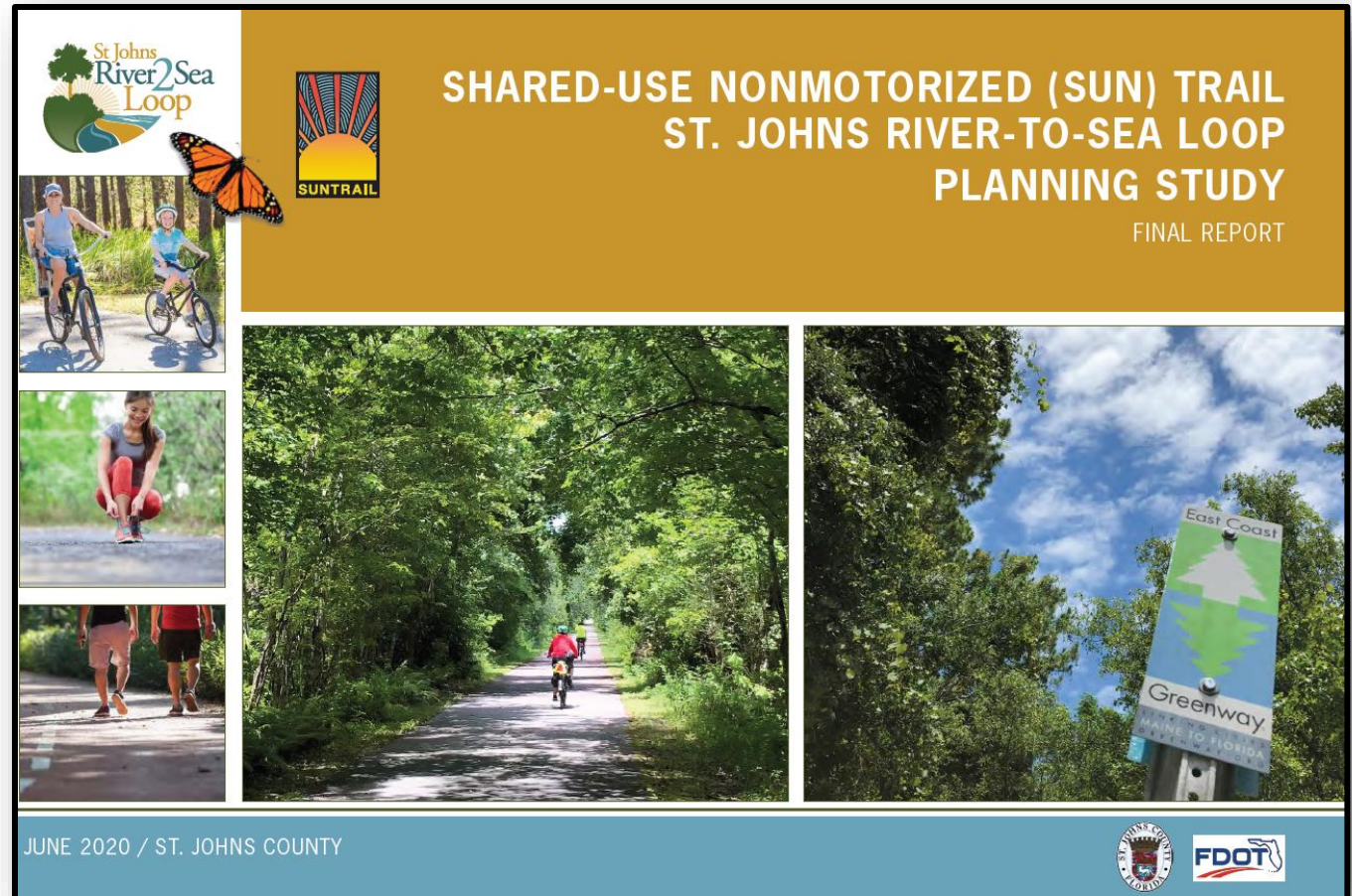
Florida Department of Transportation
District 2
1109 S. Marion Avenue, MS 2013
Lake City, Florida 32025-5874
Dorothy.Neal@dot.state.fl.us
(386) 758-3767

Stefan Kulakowski, FCCM, CPM
State Title VI Coordinator

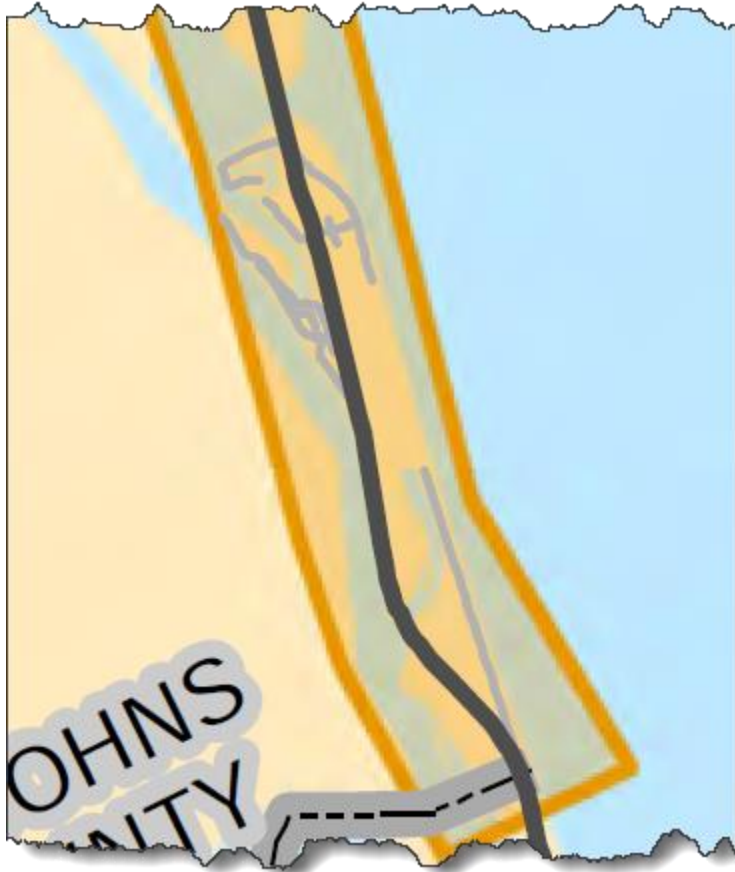
Florida Department of Transportation
Equal Opportunity Office
605 Suwannee Street, MS 65
Tallahassee, Florida 32399-0450
Stefan.Kulakowski@dot.state.fl.us
(850) 414-4742

Planning Study 2020

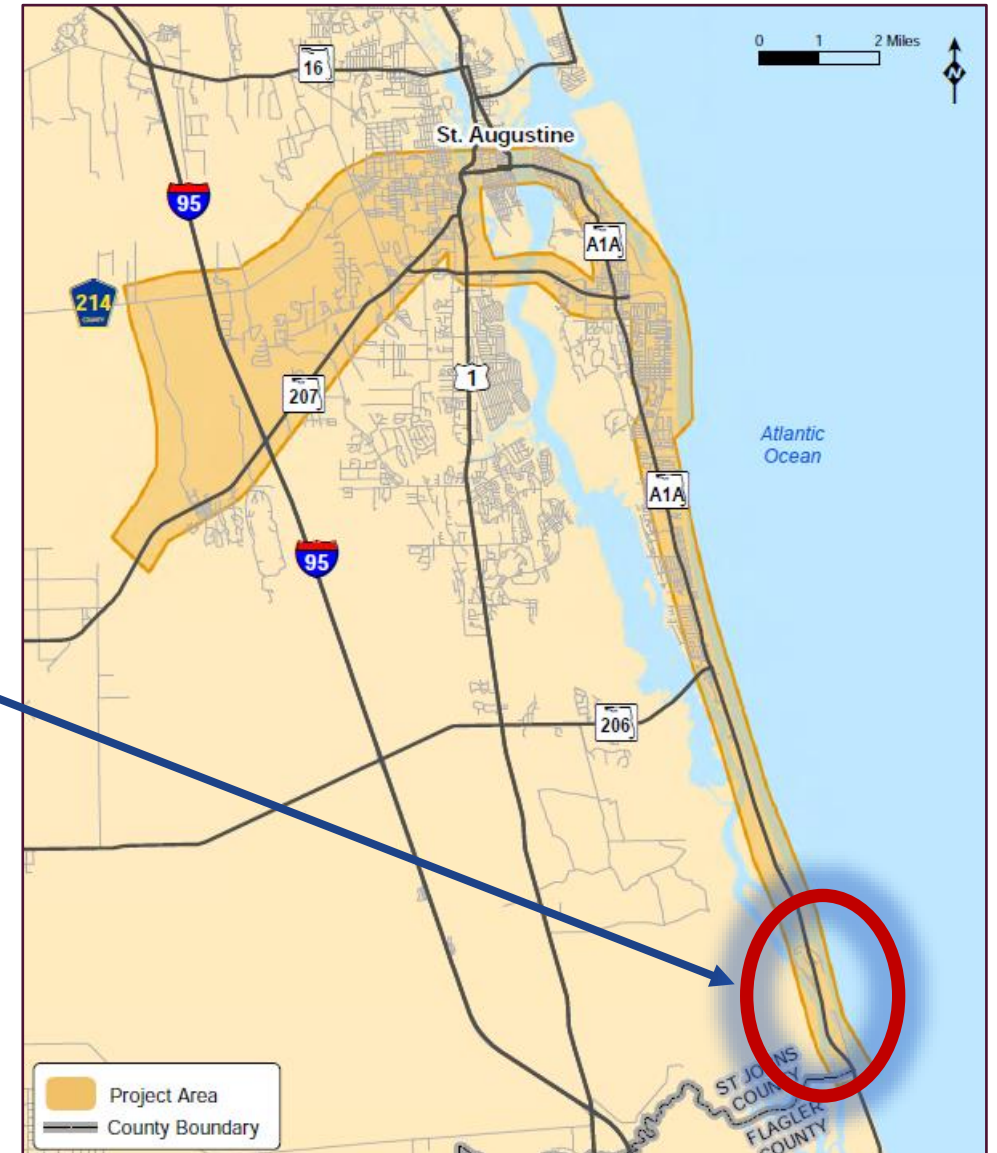
- 26-mile study from Vermont Heights to Marineland
- Segmented the route into “bite size” pieces
- Southern-most section from Marineland to Matanzas Inlet Bridge



Planning Study 2020 - Detail



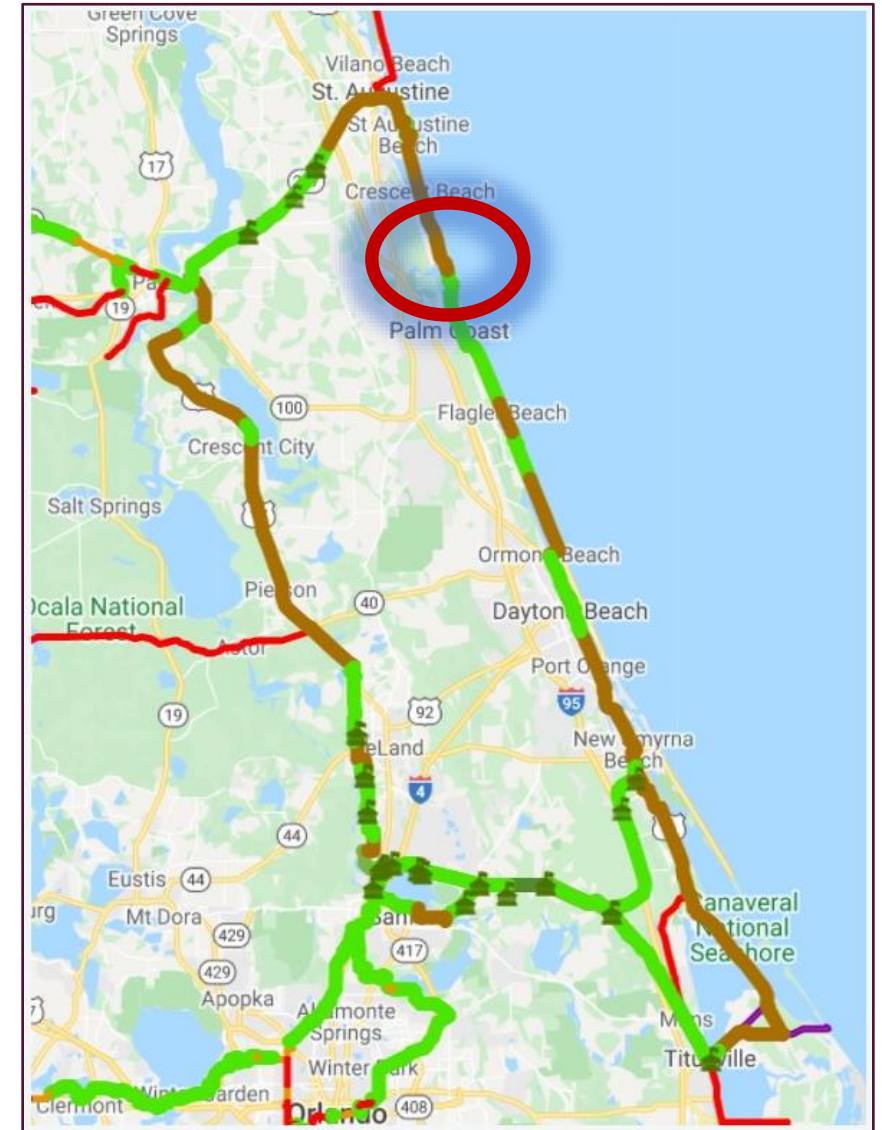
SR A1A from Marineland to Matanzas Inlet



Setting the Context: Designations

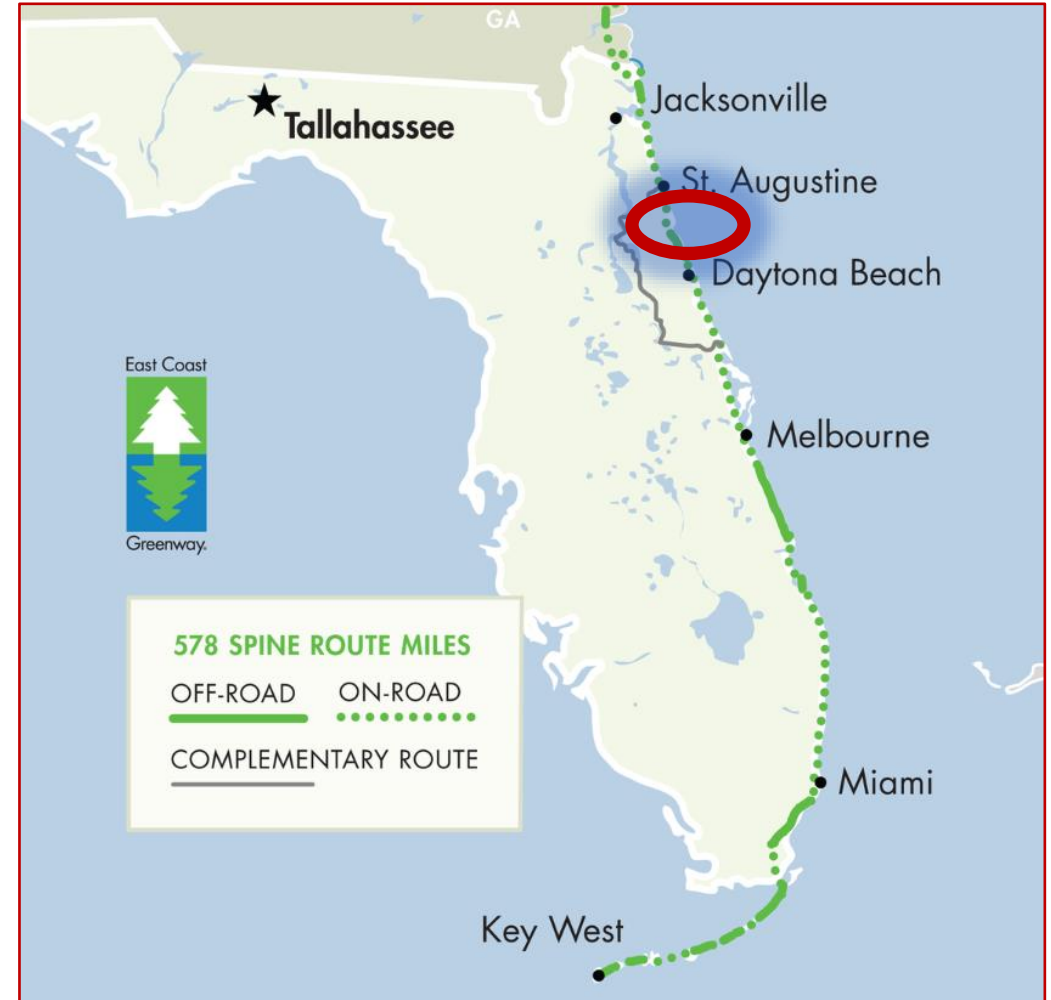


The St. Johns River-to-Sea Loop (SJR2C) is a 260-mile paved multi-use trail project underway in northeast Florida. It runs through five Florida counties, includes the entire Palatka-to-St. Augustine State Trail and is part of the 3,000-mile East Coast Greenway. It also overlaps with the Florida Coast-to-Coast Trail and other long-distance trail corridors.



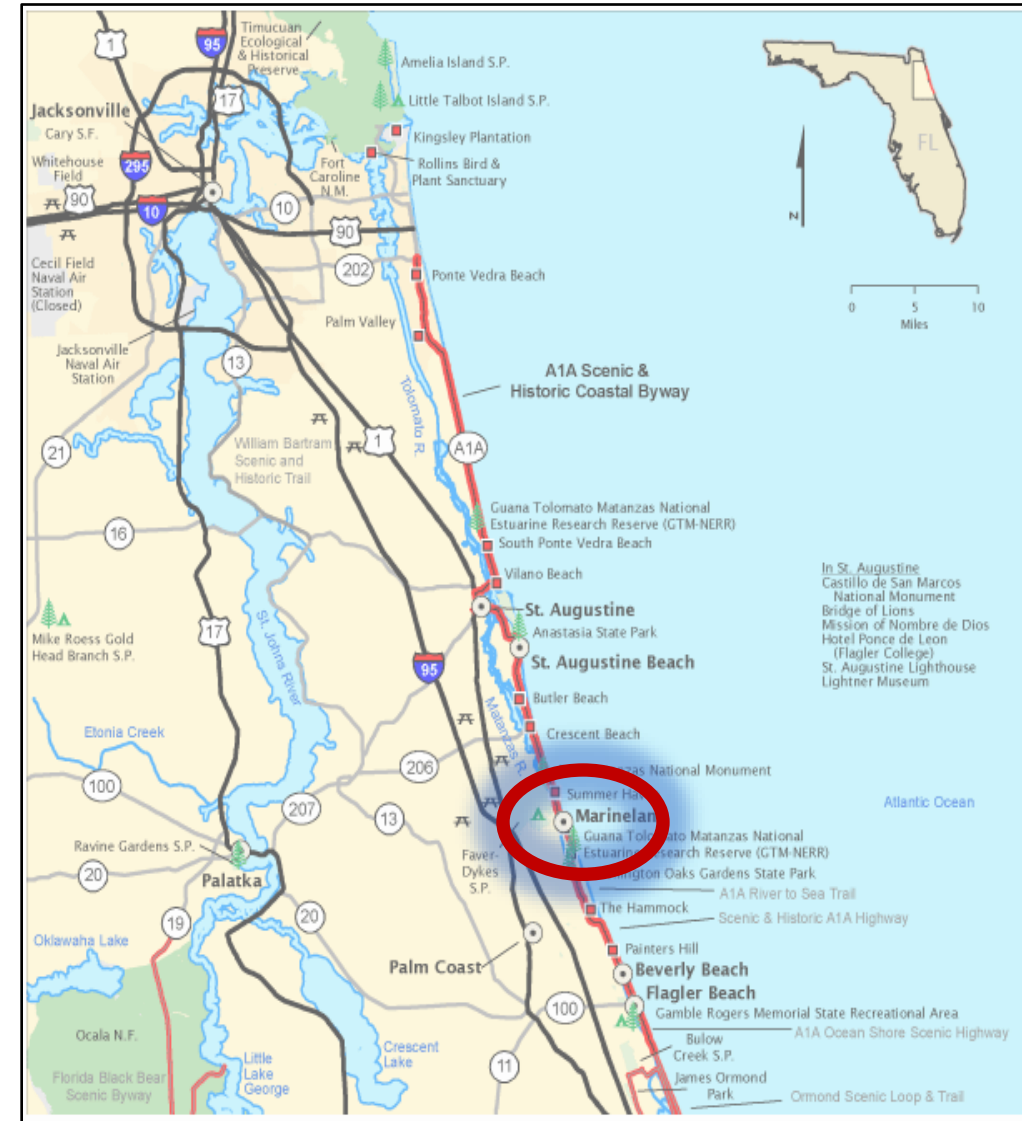
Setting the Context: Designations

The East Coast Greenway connects 15 states and 450 cities and towns for 3,000 miles from Maine to Florida. The Greenway fosters a safe walking and biking route through the country's most populated corridor.

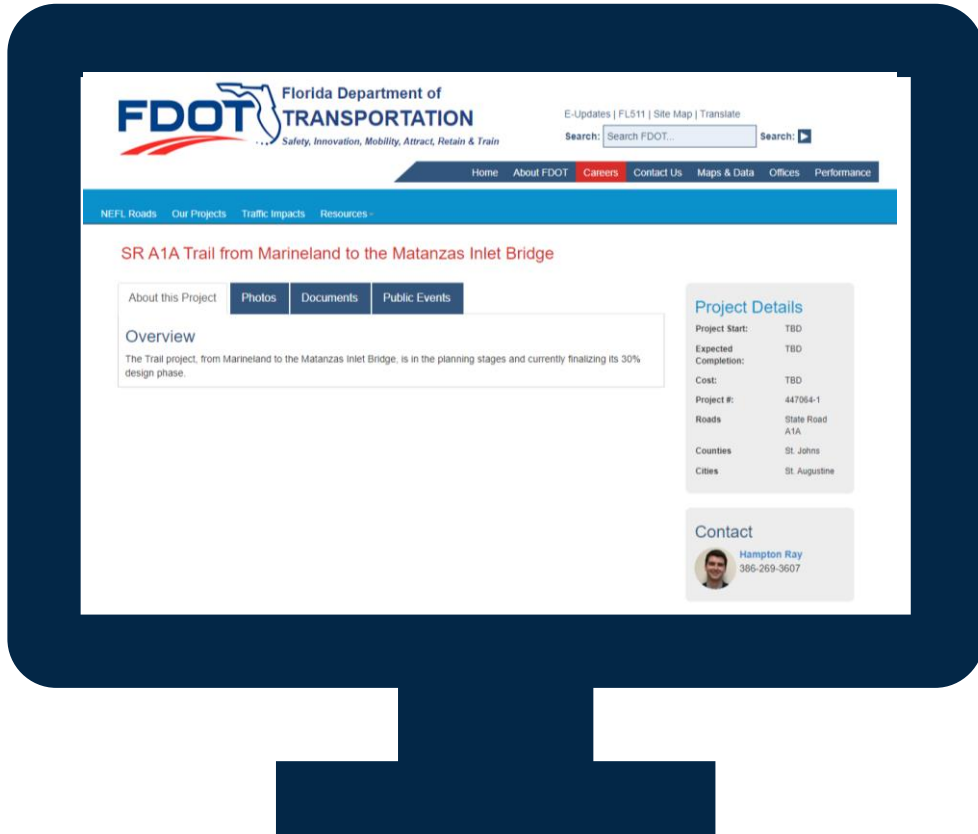


Setting the Context: Designations

The U.S. Department of Transportation designated the A1A Scenic & Historic Coastal Highway as a National Scenic Byway in 2002 and Florida's second All-American Road in 2021. The 72-mile corridor covers both St. Johns and Flagler counties, spanning from the Volusia/Flagler County Line to the St. Johns/Duval County Line on the east coast of Florida.



Project Website



For more information regarding this project, please visit the project website at

<https://nflroads.com/ProjectDetails.aspx?p=5548>



Scan here to visit project webpage

www.nflroads.com → St. Johns County → Future Projects

Project Information

Project Limits: Marineland to south of the Matanzas Inlet Bridge

Design Status: 30% Plans FY 2023
60% Plans: FY 2024
Final Plans: FY 2028

Construction: FY 2028

Estimate: \$9.9M



SUN Trail Program funded project



Project Alignment

- Construction Cost
- Relative Maintenance Level
- Safety of Trail User
- Potential Environmental Impacts
- Wetlands
- Floodplains
- Coastal Resources
- Protected Species & Habitat
- Utilities
- Scenic Viewshed



Newly Rebuilt Dune (FDOT photo 12/14/22)



Post Hurricane Ian Breach of Dunes (FDOT drone photo 10/04/22)



Post Hurricane Nicole Breach of Dunes (FDOT drone photo 11/10/22)

Estimated 12 ft wide trail

BEGIN PROJECT
STA. 1520+92.84

MC BRIDE LN

35 MPH

45 MPH

5' EXIST. SIDEWALK

GURIN CIR

404

1520

N13°18'54"W

405

N11°29'5"W

1522

SR A1A

406

407

408

N13°29'30"W

N13°15'15"W

MARINELAND
DOLPHIN
ADVENTURE

STATION EQUATION
STA. 1522+71.93 BACK =
STA. 6+70.94 AHEAD

R COUNTY

NTY

Estimated 12 ft wide trail

WEST ALIGNMENT

SURVEY A1A



Estimated 12 ft wide trail



Estimated 12 ft wide trail

WEST ALIGNMENT



Estimated 12 ft wide trail



Estimated 12 ft wide trail

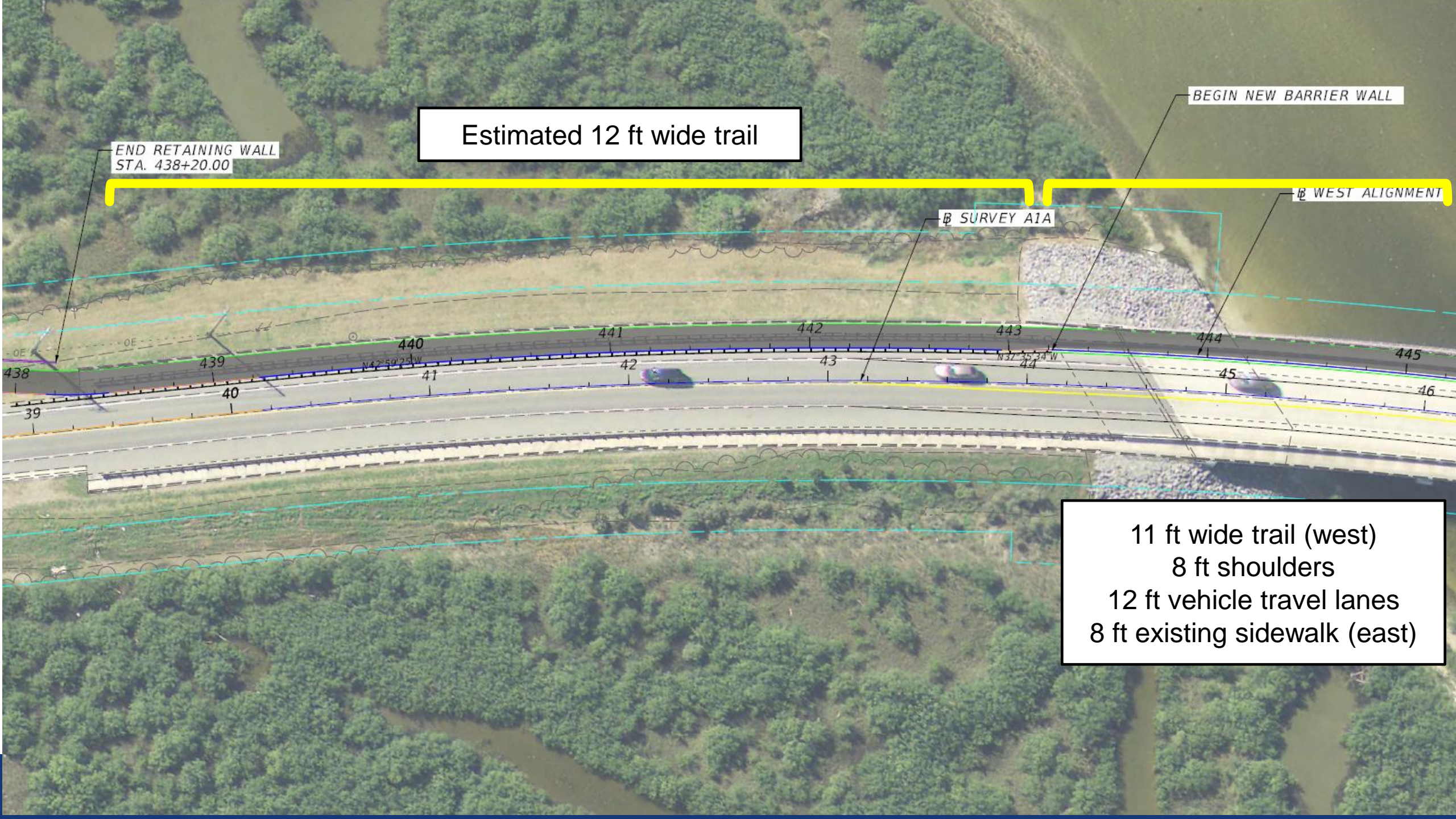
END RETAINING WALL
STA. 438+20.00

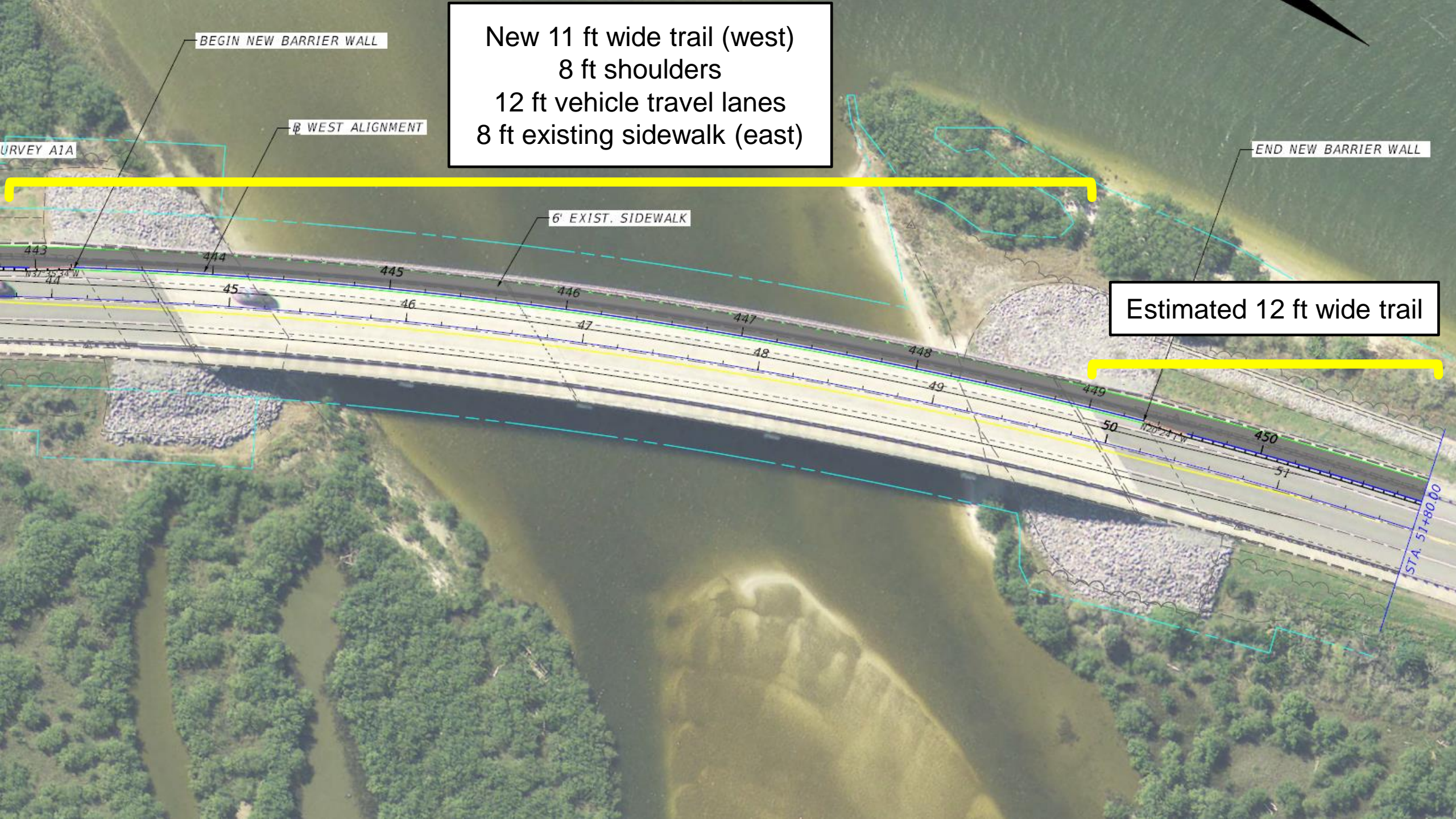
BEGIN NEW BARRIER WALL

⊕ SURVEY A1A

⊕ WEST ALIGNMENT

11 ft wide trail (west)
8 ft shoulders
12 ft vehicle travel lanes
8 ft existing sidewalk (east)





New 11 ft wide trail (west)
8 ft shoulders
12 ft vehicle travel lanes
8 ft existing sidewalk (east)

BEGIN NEW BARRIER WALL

WEST ALIGNMENT

SURVEY A1A

6' EXIST. SIDEWALK

END NEW BARRIER WALL

Estimated 12 ft wide trail

STA. 51+80.00

443

444

445

446

447

448

449

450

451

449

50

51

450

51

Estimated 12 ft wide trail



Estimated 12 ft wide trail

MATANZAS RIVER

WEST ALIGNMENT



Estimated 12 ft wide trail



Estimated 12 ft wide trail



Estimated 12 ft wide trail



Estimated 12 ft wide trail

JULY LN

END RETAINING
STA. 494+

Ⓢ SURVEY A1A

Ⓢ WEST ALIGNMENT

BEGIN RETAINING WALL
STA. 494+46.00



487

488

489

490

491

492

493

494

88

89

90

91

92

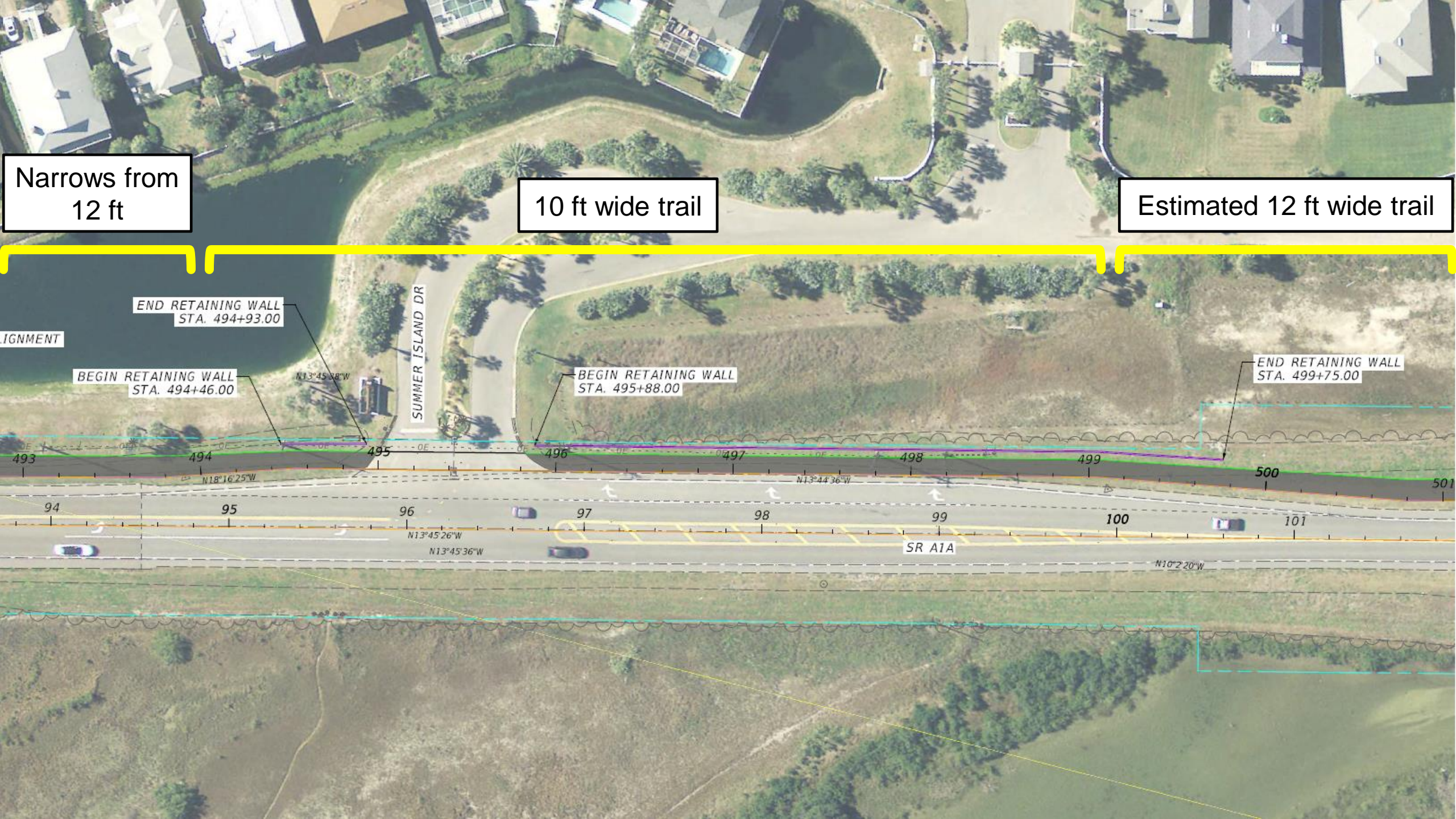
93

94

95

N14°23'2"W

N18°16'25"



Narrows from
12 ft

10 ft wide trail

Estimated 12 ft wide trail

IGNMENT

END RETAINING WALL
STA. 494+93.00

BEGIN RETAINING WALL
STA. 494+46.00

N13°45'38"W

SUMMER ISLAND DR

BEGIN RETAINING WALL
STA. 495+88.00

END RETAINING WALL
STA. 499+75.00

493 494 495 496 497 498 499 500 501

94 95 96 97 98 99 100 101

SR A1A

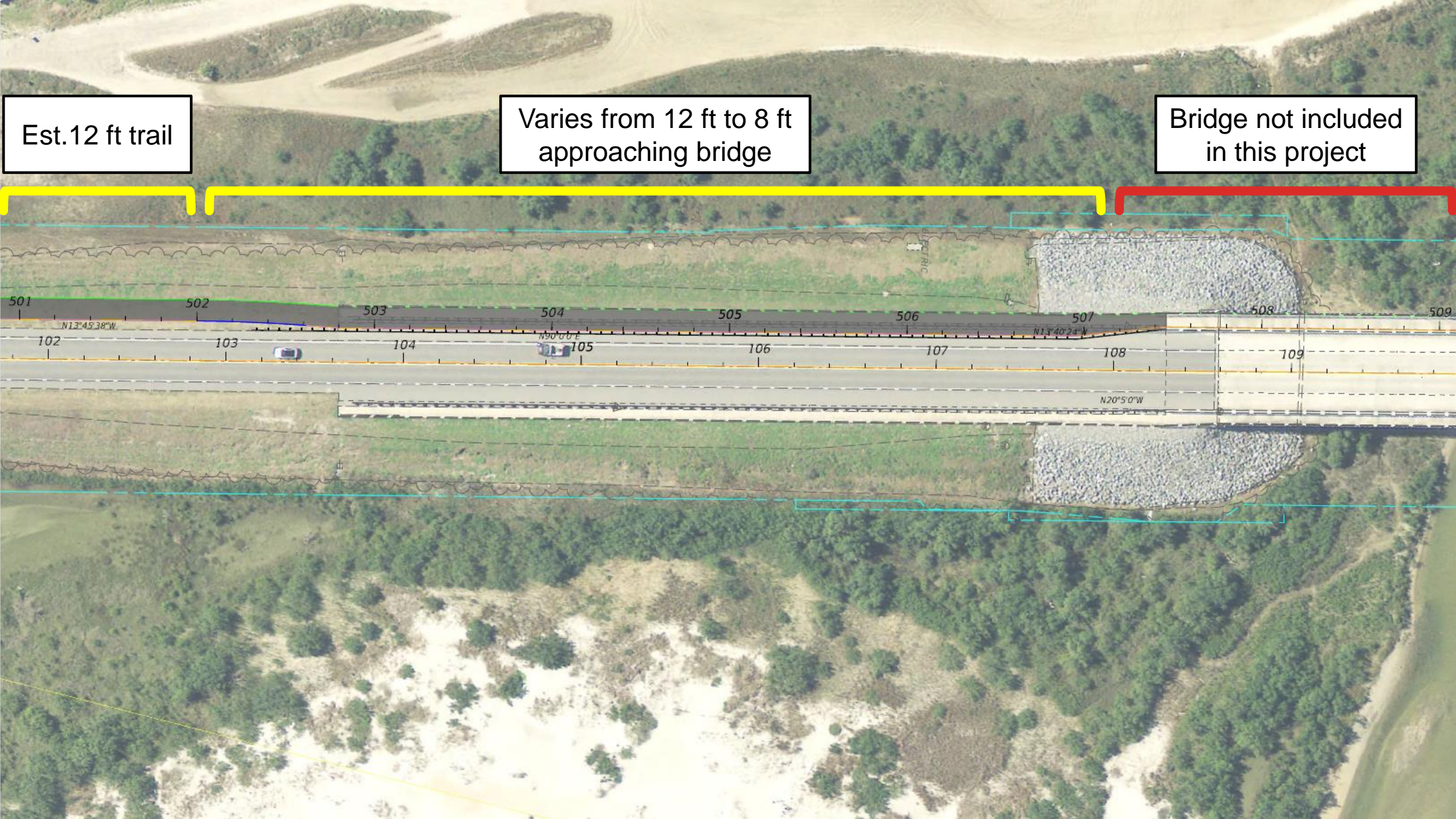
N18°16'25"W

N13°45'26"W

N13°45'36"W

N13°44'36"W

N10°2'20"W



Est. 12 ft trail

Varies from 12 ft to 8 ft
approaching bridge

Bridge not included
in this project

Bridge not included
in this project

⊕ SURVEY A1A

⊕ WEST ALIGNMENT

Estimated 12 ft wide trail



Estimated 12 ft wide trail

55 MPH

45 MPH

WEST ALIGNMENT

SURVEY A1A

STA. 122+60.00

522

N17°44'47"W

123

N18°1'26"W

523

124

524

125

525

126

526

127

527

128

528

129

529

130

Estimated 12 ft wide trail

END PROJECT
WEST ALIGNMENT
STA. 136+89.14



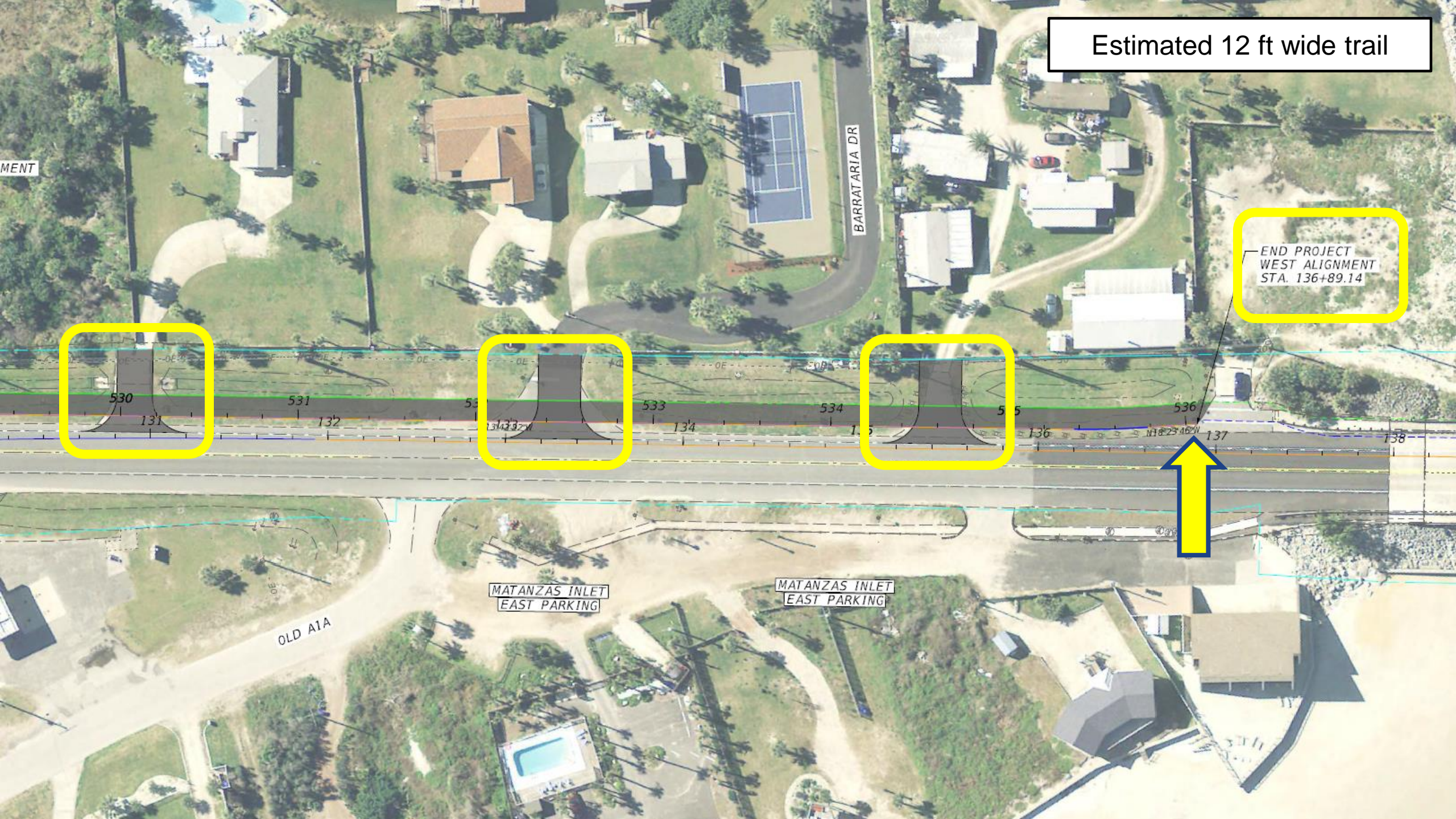
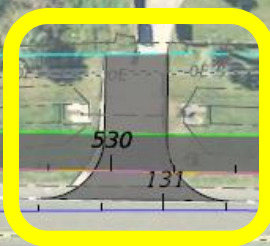
MATANZAS INLET
EAST PARKING

MATANZAS INLET
EAST PARKING

OLD A1A

BARRATARIA DR

MENT





Thank you for coming!

Your comments may be delivered today via comment card. You may also mail or email them to

**FDOT Project Manager, Barney Bennette, P.E.
1109 S. Marion Avenue, MS 2007
Lake City, FL 32025-5874**

barney.bennette@dot.state.fl.us

Comments must be received by June 2, 2023



Scan here to visit project webpage